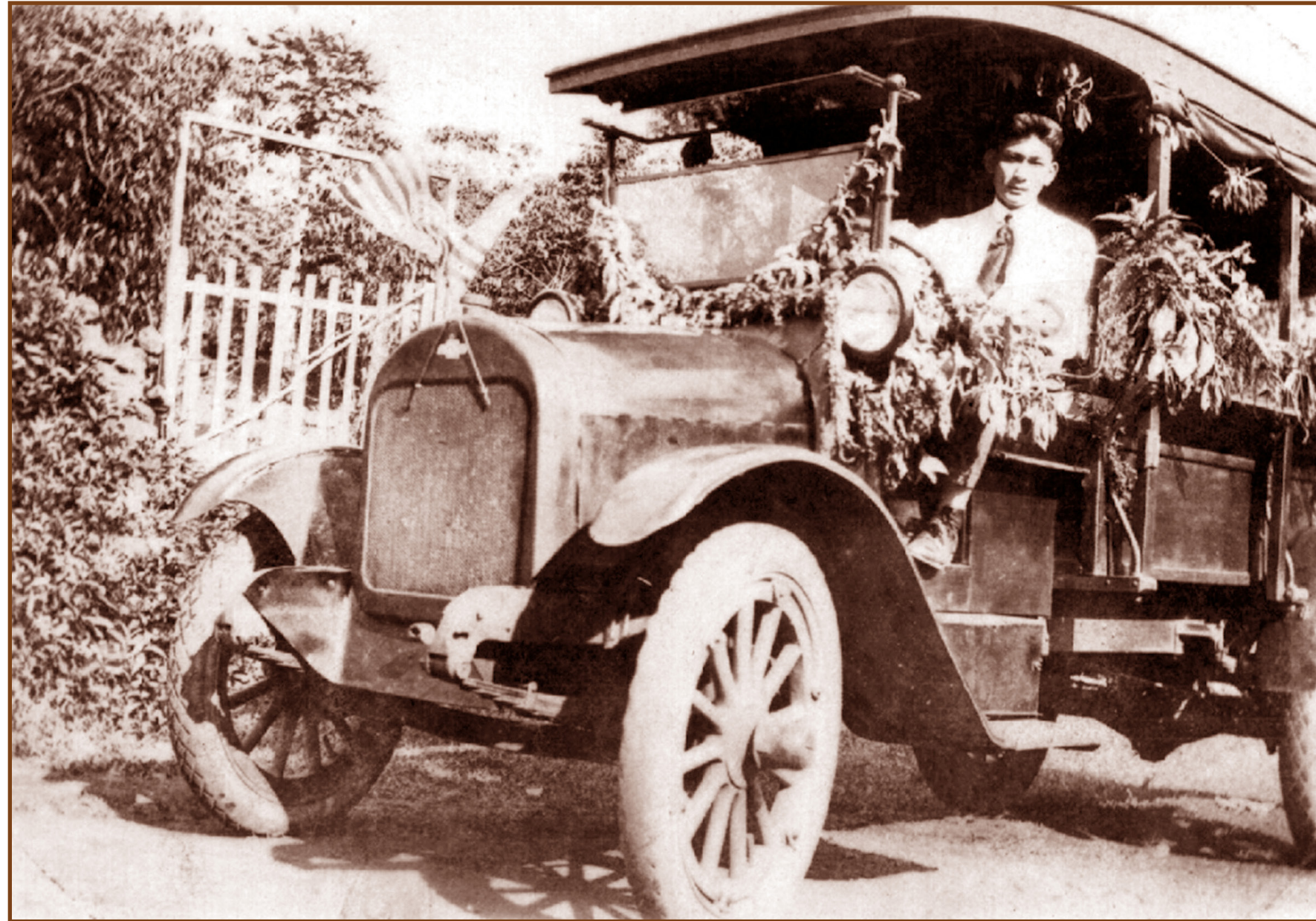


# Ueda Garage 1910

Toyoki Ueda is shown ready for a parade in one of his trucking company vehicles he used for transporting people in the 1940's. This building was one of Toyoki's garages up until the late 1970s.

In 1980 the building was leased by Toyoki's son Edwin Ueda to Doug Sigel for use as ceramic art studio and gallery.

On January 1, 1990, artists, Matthew & Mary Lovein established and opened Holualoa Gallery in this location.



Pulama ia Kona Heritage Preservation Council Photo courtesy of Ueda family collection

[Pulamaiakona.org](http://Pulamaiakona.org)